

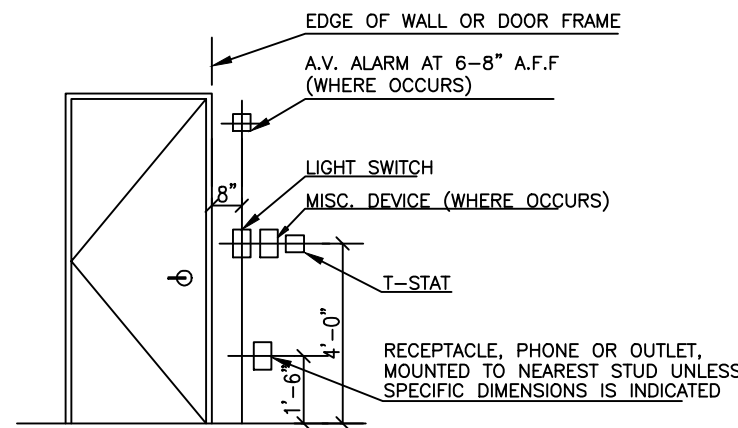
NOTE: REFER TO DESIGN DOCUMENT FOR ADDITION NOTES. ALL NOTES FOUND ON THESE DOCUMENT WILL SUPERCEDE THE FOLLOWING NOTES SHOULD THERE BE A CONFLICT.

1. APPLICABLE CODES: ALL WORK SHALL BE DONE IN ACCORDANCE WITH THE REQUIREMENTS OF THE FOLLOWING:
 - A. CURRENT APPLICABLE CODE OF THE NATIONAL ELECTRICAL CODE
 - B. CURRENT APPLICABLE ISSUE OF THE IBC CODE
 - C. REGULATIONS FOR LOCAL AUTHORITIES HAVING JURISDICTION
 - D. OSHA REGULATIONS
2. EXISTING CONDITIONS : THE ELECTRICAL CONTRACTOR SHALL VISIT THE SITE AND CAREFULLY EXAMINE ALL EXISTING CONDITIONS THAT MAY AFFECT HIS BID.
3. EXISTING ELECTRICAL INSTALLATION: ALL EXISTING ELECTRICAL WORK WHICH WILL BE DISTURBED DUE TO ANY CHANGES REQUIRED UNDER THIS CONTRACT SHALL BE RETURNED TO ITS ORIGINAL OPERATING CONDITION. ALL EXISTING CONDUIT THAT WILL NOT BE REVISED SHALL BE REMOVED WHERE THEY WILL BE EXPOSED AFTER COMPLETION OF CONSTRUCTION. CONTRACTORS SHALL REMOVE ALL WIRING FROM ABANDONED CONDUITS. DISCONNECT FROM ALL POWER SOURCES AND PROVIDE BLANK PLATES ON ALL ABANDONED OUTLETS.
4. ELECTRICAL DEMOLITION:
 - A. PROVIDE ALL ELECTRICAL DEMOLITION WORK NECESSARY TO INSTALL NEW WORK.
 - B. CONTRACTOR SHALL EXERCISE CARE IN REMOVING DEMOLISHED ITEMS AND SHALL REPAIR OR REPLACE AT HIS COST ANY DAMAGE CAUSED TO EXISTING CONSTRUCTION AND EQUIPMENT TO REMAIN.
 - C. ALL MATERIALS REMOVED UNDER DEMOLITION (AND NOT TO BE RELOCATED) SHALL BE REMOVED COMPLETELY FROM THE SITE UNLESS OTHERWISE NOTED.
 - D. WHERE ELECTRICAL DEVICES AND EQUIPMENT (RECEPTACLES, LIGHTING, FIXTURES, SWITCHES, ETC.) ARE EXISTING TO REMAIN CONTRACTOR SHALL MAINTAIN EXISTING CONNECTIONS TO THOSE DEVICES. WHERE ADJACENT TO EXISTING DEVICES AND EQUIPMENT IS DISCONNECTED BY THE WORK IN CIRCUIT SPACES, THE CONTRACTOR SHALL RECONNECT THE REMAINING EXISTING DEVICES AS INDICATED OR TO THE REMAINING UNDISTURBED PORTION OR EXISTING CIRCUIT.
5. CONDUCTORS AND CABLES: COPPER, IN ACCORDANCE WITH ASTM STANDARDS, SEE REFERENCES AWG. CONDUCTORS NO. 10 AND SMALLER SIZE SOLID, NO. 8 AND LARGER STRANDED. INSULATION OF CONDUCTOR RUBBER OF THERMOPLASTIC, TYPES RHW, HWN, OR USE MIN. SIZE: NO. 12 ARMORED CABLE (MC) USED FOR BRANCH CIRCUITS ONLY WHEN PERMITTED BY CODE. MIN. SIZE: NO. 12.
6. OUTLET BOXES: FOUR INCH SQUARE FOR SWITCHES AND RECEPTABLES AND FOUR INCH OCTAGONAL FOR LIGHTING FIXTURES WITH APPROVED PLASTIC RINGS AND COVER PLATES.
7. CIRCUIT NUMBERS INDICATED ON DRAWINGS FOR BRANCH CIRCUIT HOME RUNS ARE FOR INFORMATION ONLY. ACTUAL FIELD CONDITIONS WILL VARY.
8. WHEN CONFLICTS EXIST BETWEEN REGULATORY CODES THE MOST STRINGENT OF THE CODES OR REGULATIONS SHALL APPLY.
9. THE CONTRACTOR SHALL GUARANTEE ALL WORK PERFORMED AND ALL EQUIPMENT INSTALLED TO BE IN STRICT ACCORDANCE WITH ALL APPLICABLE CODES AND FREE FROM DEFECTS, THIS GUARANTEE SHALL BE APPLICABLE FOR ONE YEAR FROM DATE TO FINAL ACCEPTANCES.
10. GC SHALL PROVIDE THE UPDATED PANEL DIRECTORIES WITH CIRCUIT NUMBERS TO MATCH DRAWINGS.

1. CONTRACTOR SHALL FIELD VERIFY CEILING TYPES, CEILING HEIGHTS, ROOM DIMENSIONS, AND SPRINKLER LOCATIONS BEFORE START OF ANY WORK. ALL WORK SHALL BE STRICTLY COORDINATED BETWEEN INDIVIDUAL CONTRACTORS BEFORE AND DURING CONSTRUCTIONS.
2. COORDINATE WITH ELECTRICAL AND MECHANICAL DRAWINGS FOR LOCATIONS OF AIR DIFFUSERS, SPRINKLER HEADS, LIGHTINGS, EMERGENCY LIGHTINGS, ETC.
3. SPRINKLER PIPING SHALL BE INSTALLED ABOVE THE CEILING AND CENTERED IN CEILING TITLE UNLESS NOTED OTHERWISE .
4. FIRE PROTECTION SHALL BE PROVIDED BY A WET SPRINKLER SYSTEM IN ACCORDANCE WITH NFPA13 AND BUILDING CODES.
5. ALL UPRIGHT SPRINKLER HEADS TO BE TURNED DOWN/ RELOCATED AS NECESSARY TO THE NEW CEILING LEVEL. PROVIDE ADDITIONAL SPRINKLER SYSTEM ABOVE, BELOW AND/OR BESIDE DUCTWORK EQUIPMENT, STEEL STRUCTURE, ETC. AS REQUIRED BY NFPA TO ELIMINATE OBSTRUCTIONS TO SPRAY PATTERNS. RELOCATE AND PROVIDE SPRINKLER AS REQUIRED TO ACCOMMODATE NEW ROOM LAYOUTS.
6. INSTALLATION OR ALTERATIONS TO SPRINKLER SYSTEM SHALL COMPLY WITH THE 2000NFPA SECTION 9-7, AND EXECUTIVE REGULATION 10-97. (STANDPIPES, WHERE PROVIDED, SHALL COMPLY WITH NFPA14.)
7. IT IS THE FIRE SPRINKLER CONTRACTORS RESPONSIBILITY TO SUBMIT PLANS FOR MODIFICATION OF THE FIRE SPRINKLER SYSTEM AS REQUIRED TO ACCOMMODATE THE NEW TENANT SPACE. PROVIDE CEILING AND SPRINKLER DRAWING TO BUILDING OWNER FOR REVIEW WHEN SENDING TO FIRE MARSHAL FOR REVIEW.
8. SPRINKLER CONTRACTORS SHALL CONTACT THE LOCAL FIRE MARSHALL'S OFFICE FOR THIS REVIEW AND APPROVAL PRIOR TO RELOCATION AND INSTALLATION.
9. CEILING HEIGHT TO BE SHOWN ON THE REFLECTED CEILING PLAN AND THE TYPICAL PARTITION SECTION DETAILS.
10. ANY MODIFICATIONS REQUIRED TO ACCOMMODATE TENANT LAYOUT SHALL BE THE RESPONSIBILITY OF THE TENANT.

(E) EXISTING TO REMAIN
(N) NEW
(R) RELOCATED TO EXISTING
(ER) EXISTING TO BE RELOCATED
(X) EXISTING TO BE REMOVED
⊙ DUPLEX RECEPTACLE 120V, 20A, 1 PH, 18" A.F.F.
⊙ GFI DUPLEX RECEPTACLE 120V, 20A, 1 PH, 18" A.F.F.
⊙ CEILING RECEPTACLE
⊙ FLOOR RECEPTACLE
⊙ DUPLEX RECEPTACLE 120V, 20A, 1 PH, COUNTER HEIGHT
⊙ SPECIAL RECEPTACLE, MATCH TO EQUIPMENT.
CONTRACTOR SHALL COORDINATE W/ EQUIPMENT
SUPPLIER, PROVIDE AND INSTALL APPROPRIATE
RECEPTACLE TYPE, VOLTAGE, AMPS AT SUPPLIER
RECOMMENDED HEIGHT
➔ HOME RUN TO ELECTRIC PANEL BOARD
P ELECTRIC PANEL BOARD 120/208V-277/480V
▶ TELEPHONE OUTLET
▷ CABLE OUTLET/ CATV OUTLET
DISCONNECT SWITCH-UNFUSED,FUSED
✓✓ SINGLE POLE SWITCH W/ WALL MOTION SENSOR,
+48" AFF. UON.
① JUNCTION BOX
\$# SINGLE POLE SWITCH W/NUMBER, +4'-0" AFF. UON.
\$D DIMMER SWITCH, +48" AFF. UON.
\$3 3POLE SWITCH, +48" AFF. UON.
\$A MANUAL STARTER OR CONCEALED PLUG DISCONNECT
○ MOTOR
[M] ELECTRICAL METER
⊗ CONTROL DEVICE BY EQUIPMENT CONTRACTOR










A	AMPERE
AF	ABOVE FINISHED FLOOR
E	EXISTING TO REMAIN
CB	CIRCUIT BREAKER CIRCUIT CKT
ED	REINSTALLED FIXTURE/DEVICE
EG	EQUIPMENT GROUND
FAFP	FIRE ALARM CONTROL PANEL
FACP	GRAPHIC FIRE ALARM ENUNCIATOR PANEL
G	GROUND (GND)
GF	GROUND FAULT CIRCUIT
IG	ISOLATED GROUND, DEDICATED ISOLATED GROUND
MB	MAIN BREAKER
NF	NON FUSED
FSS	FUSED SAFETY SWITCH
NFSS	NON-FUSED SAFETY SWITCH
N.T.S.	NOT FOR SCALE
R	EXISTING TO BE RELOCATED OR REMOVED
UNO	UNLESS NOTED OTHERWISE
V	VOLTAGE
S	SINGLE POLE TOGGLE SWITCH. MOUNTING HEIGHT: +48" A.F.F. U.O.N. SUBSCRIPT AT SWITCH SYMBOL INDICATE THE FOLLOWING D: DIMMING SWITCH 2000W MAX 3: THREE WAY
SM	MANUAL MOTER STARTER WITH THERMAL OVERLOAD PROTECTION
WP	WATER PROOF



1. COORDINATE WITH ELECTRICAL AND MECHANICAL DRAWINGS FOR LOCATION OF AIR DIFFUSERS, SPRINKLER HEADS AND EMERGENCY LIGHTING, ECT. NOTIFY ARCHITECT IF CONFLICT OCCURS.
2. IF THIS TENANT'S SPACE HAS SPRINKLER SYSTEM, THE FIRE SPRINKLER CONTRACTORS RESPONSIBILITY TO SUBMIT PLANS FOR MODIFICATION OF THE FIRE SPRINKLER SYSTEM AS REQUIRED TO ACCOMMODATE THE NEW TENANT SPACE. SPRINKLER CONTRACTOR SHALL CONTACT THE LOCAL FIRE MARSHAL'S OFFICE FOR THIS REVIEW AND APPROVAL AND THE ARCHITECT PRIOR TO INSTALLATION. PROVIDE CEILING AND SPRINKLER DRAWING TO BUILDING OWNER FOR REVIEW WHEN SENDING TO FIRE MARSHAL FOR REVIEW.
3. ALL FINISHING AND PAINTING REQUIREMENTS SHALL BE DIRECTED TO FINISH SCHEDULES & SPECIFICATION FOR INSTRUCTIONS.
4. ALL FINISHING AND PAINTING REQUIREMENTS SHALL BE DIRECTED TO FINISH INFORMATION FOR INSTRUCTIONS.
5. CEILING HEIGHT ARE AS SHOWN ON PLAN.
6. IN THE EVENT OF DISCREPANCIES BETWEEN QUANTITY, LOCATIONS, AND/OR TYPE OF LIGHTING FIXTURES BETWEEN ARCHITECTURAL AND ENGINEERING DRAWINGS NOTIFY ARCHITECT FOR REVIEW ARCHITECTURAL DRAWINGS GOVERN.
7. GENERAL CONTRACTOR IS RESPONSIBILITY FOR THE QUANTITY OF MATERIALS ON THIS PLAN NOTIFY ARCHITECT OF DISCREPANCIES BETWEEN QUANTITY REQUIRED AND QUANTITY SHOWN.

- ELECTRICAL LIGHTING POWER SHALL BE COMPLIED WITH IECC SECTION C405.2.1, C405.2.2, C405.2.3, C405.2.5
- THIS TENANT'S SPACE IS 1,185 SQ.FT. WE DECIDE REFERRED IECC SECTION C505.2.1.1 FOR INTERIOR LIGHTING CONTROLS
- PROVIDE AT LEAST ONE SWITCH FOR EACH AREA ENCLOSED BY WALLS OR FLOOR TO CEILING PARTITIONS IECC C505.2.1
- PROVIDE DUAL SWITCHING OF ALTERNATE ROWS OF LUMINARIES FOR LIGHT REDUCTION
- CONTROLS REFERRED ADDITIONAL CONTROLS AS IECC C505.2.1.2
- PROVIDE AUTOMATIC WALL SWITCH FOR EACH ROOM TO TURN LIGHTING OFF WITHIN 30 MINUTES OF AN OCCUPANT LEAVING SPACE. PLEASE SEE CUT SHEET ATTACHED FOR MORE INFORMATION AS IECC C405.2.2.1
- INTERIOR LIGHTING LOAD CALCULATION AS IECC SECTION C505.2:

TENANT GROSS AREA	=1,185SQ.FT.
TENANT INTERIOR LIGHTING POWER PROVIDED AS SECTION C405.2.1() (SEE PANEL SCHEDULE)	=620 WATTS.
INTERIOR LIGHTING POWER ALLOWANCES AS SECTION C405.5.1() FOR OFFICE	=1.0 W/SQ.F
TENANT INTERIOR LIGHTING POWER ALLOWANCES	=1.0 W/SQ.FT.x1,185 SQ.FT. =1,185 WATTS.
- TOTAL CALCIFIED INTERIOR LIGHTING POWER 620 WATTS IS NO GREATER THAN INTERIOR LIGHTING POWER ALLOWANCES 1,185 WATTS AS TABLE 505.5.5 FOR OFFICE
- PROVIDE INDIVIDUAL CONTROL TO CONTROL THE LIGHTING ADJACENT TO VERTICAL FENESTRATION IN FRONT THAT CONTROL SHALL BE CONTROLLED INDEPENDENT OF GENERAL AREA LIGHTING AND SEPARATELY WITH DAYLIGHT ZONE CONTROL AS SECTION C405.2.2.3

TYPE	DESCRIPTION/LOCATION	LAMPS			MANUFACTURER	CATALOG No.	REMARKS
		No	TYPE	WATTS			
(A) 	2'X2' RECESSED LED DIRECT/INDIRECT SERIES VT SERIES RELIGHT	2	LED-20LP-BALLAST	18	LITHONIA OR EQUAL	2VTL2R-20L-ADP-EZI	AS BUILDING STANDARD DIRECT/INDIRECT LIGHTING OR EQUAL APPROVED
(B) 							NOT USED
(C) 	6" LED RECESSED LIGHTING	1	600 LUMENS 8W-120V	8	LITHONIA OR EQUAL	REAL6-D6MW ESL-600L	NEW FIXTURE / OR EQUAL APPROVED
(C) 	6" LED RECESSED NIGHT LIGHTING	1	600 LUMENS 8W-120V	8	LITHONIA OR EQUAL	REAL6-D6MW ESL-600L	FIXTURE SHALL BE EQUIPPED WITH BATTERY BALLASTS OPERATIONAL FOR MIN. 90 MINUTES AND CONNECT AHEAD OF ANY LOCAL SWITCH
(D)  	EXIT SIGN FIXTURE, 1FACE LED W/ BATTER WALL/CEILING MOUNTED EXIT SIGN FIXTURE, 2FACE LED W/ BATTER WALL/CEILING MOUNTED	1	5W-120V	5	EMERGI-LITE OR EQUAL	#PREM SERIES 6V, 12W HEADS	EDGEULT ACRYLIC EXIT SIGNAGE PER BUILDING STANDARD. FIXTURE, LAMP SHALL BE LISTED FOR WET LOCATIONS. PROVIDE AND CONNECT TO REMOTE EMERGENCY BALLAST.
(E) 	SAFETY LIGHTING SYSTEM EMERGENCY UNIT EQUIPMENT	2	TUNGSTEN 9W-6V	9	LITHONIA OR EQUAL	E2-6V-50W NICKEL CADMIUM-TSW-WHITEUNIT BATTERY 6-E2150n	FIXTURE SHALL BE EQUIPPED WITH BATTERY BALLASTS OPERATIONAL FOR MIN. 90 MINUTES AND CONNECT AHEAD OF ANY LOCAL SWITCH
(H) 	4" LED RECESSED LIGHTING	1	600 LUMENS 8W-120V	8		EDISON-BULB 14LIGHTS	NEW FIXTURE / OR EQUAL APPROVED
(G) 	16"DIA. FABRIC DRUM PENDANT LIGHTING SERIES AURTY COLLECTION	3	16W-120V	48	LITHONIA OR EQUAL	DFMADDL II-F01	NEW FIXTURE / OR EQUAL APPROVED

1. EXISTING CONDITIONS ARE BASED ON "AS-BUILT" DRAWINGS PROVIDED BY THE OWNER AND LIMITED FIELD VERIFICATION. CONTRACTOR SHALL ADJUST TO ACTUAL FIELD CONDITIONS AT NO ADDITIONAL EXPENSE TO THE OWNER.
2. CONTRACTOR SHALL FAMILIARIZE HIMSELF WITH THE DEMOLITION WORK PRIOR TO BIDDING AND START OF WORK. CONTRACTOR IS RESPONSIBLE TO DEMOLISH ALL EXISTING AS REQUIRED FOR INSTALLATION/CONSTRUCTION OF NEW WORK.
3. CONTRACTOR SHALL BE RESPONSIBLE FOR FIELD VERIFICATION OF ALL EXISTING CONDITIONS PRIOR TO SUBMITTING A BID. NO ADDITIONS COMPENSATION WILL BE MADE FOR ANY EXTRAS DUE TO CONTRACTOR'S FAILURE TO VISIT THE JOBSITE AND/OR PREDETERMINE ALL EXISTING CONDITIONS BEFORE SUBMITTING HIS BID. ANY DISCREPANCIES SHALL BE IMMEDIATELY REPORTED TO THE ENGINEER FOR RESOLUTION.
4. ALL WORK SHALL BE COMPLETED IN ACCORDANCE WITH ALL APPLICABLE GOVERNMENT AND LOCAL CODES.
5. PROVIDE CORROSION PROTECTION FOR ALL EQUIPMENT EXPOSED TO OUTDOOR .

◆ ALL EXIT SIGNS AND ALL EMERGENCY LIGHTING UNITS SHALL BE PROVIDED WITH EMERGENCY BATTERY BALLAST. PROVIDE EXTRA CONDUCTOR AND CONNECT AHEAD OF ANY LOCAL SWITCH AS PER NEC. SECTION 700.12 (F).

◆ PROVIDE NEW AUTOMATIC WALLS SWITCH FOR EACH ROOM BY WATT STOPPER MODEL # W1-300 .

ALL CONTRACTORS PRIOR TO BID SUBMISSION PROCESS SHALL VISIT PROPOSED WORK SITE AND FIELD VERIFY ALL EXISTING CONDITIONS, ANY CONDITIONS THAT DIFFER FROM THAT SHOWN ON THIS PLAN SHALL BE REPORTED TO ARCHITECT/ ENGINEER SO THAT NEW AND REVISED BID DRAWINGS OR INFORMATION MAY BE ISSUED. MODIFICATIONS TO SCOPE OF WORK WHICH RESULTS FROM CONTRACTORS NEGLECT TO VISIT THE SITE PRIOR TO SUBMITTING BID, SHALL BE THE CONTRACTORS SOLE RESPONSIBILITY .

